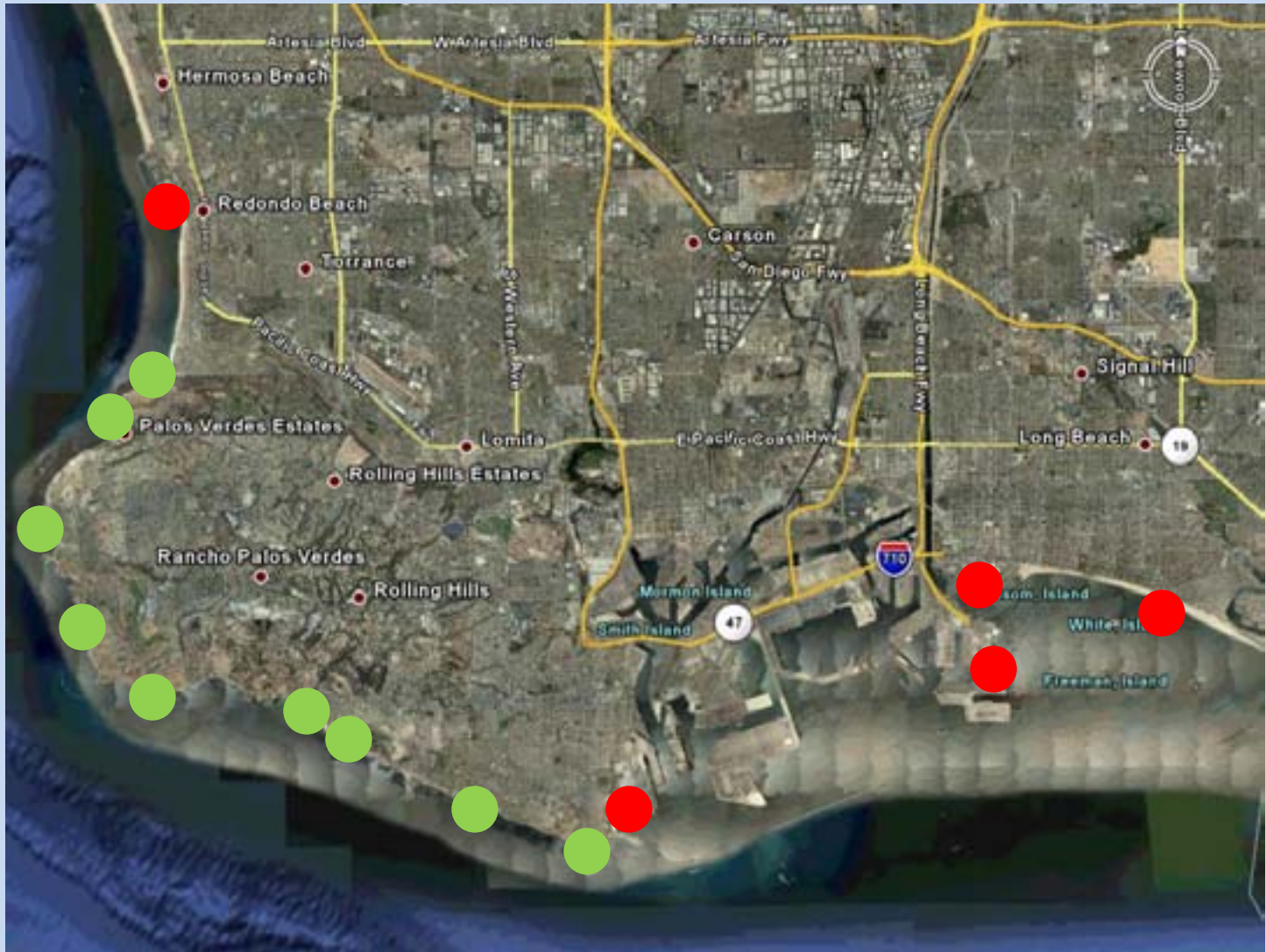


# The Lack of White Croaker Signage along the Palos Verdes Shelf



# Area of Focus for White Croaker Signage



# Pier Locations—Some have none



Redondo Pier



Rainbow Harbor



# Pier Locations—Some have a few



Cabrillo Pier has three signs



Belmont Pier has two signs

# Size of the Pier Problem





# Not a Pier Location—lots of signs



Pier J has a sign on almost every lamp post



# Pier J (not a pier) has the most warning signs of any fishing location



2,500 ft of fishable area

Approximately 10 warning signs



# Shoreline Fishing Locations



Malaga Cove



Royal Palms/ Whites Point



Long Point



# Shoreline Fishing Locations



# Bluff Cove





# Whites Point

